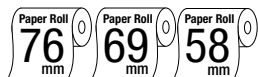


# Impact Dot Matrix Printer CT-S500/501/503

**CITIZEN**  
Micro HumanTech

Leading Technology for Humanity



- 5.0 lines/sec high-speed printing
- 76.2 / 69.5 / 57.5mm selectable paper width
- Easy paper loading
- Logic-seeking control
- Optional interface cards
- Built-in AC adapter
- Black mark function (option)
- Cash drawer kick-out
- Memory switch function
- Build-in buzzer
- Bitmap data registration (NV memory)
- ESC/POS compatibility
- Page mode
- Two color printing
- 3 PLY paper printing capability
- Easy customization by software
- Availability in white or black
- High reliability and durability



CD-S500S  
(Standard type)



CD-S501S  
(With auto cutter type)  
Available in Black



CD-S503S  
(With auto cutter/winder type)



Vertical solution

## Applications

- Receipt
- Journal
- Ticket
- Daily report
- Kitchen
- Delivery

## Type Classification

CD-S500 S RS E WH M1

1) 2) 3) 4) 5) 6)

### 1) Model type

CD-S500: Standard type  
CD-S501: With auto cutter type  
CD-S503: With auto cutter and winder type

### 3) Interface

PA: Parallel IEEE1284  
RS: Serial RS-232C  
UB: USB

### 5) Case Color

WH: Cool white  
BK: Black

### 2) Power source type

S: Built-in AC adapter type

### 4) Region

E: Europe  
U: North America

### 6) Black mark sensor

None: No sensor  
M1: Left sensor for paper front  
M2: Right sensor for paper back  
M3: Left sensor for paper front  
M4: Right sensor for paper back

**Easy paper loading**



**Accessories**

- Ink ribbon: IR-31B (Black)
- Ink ribbon: IR-31RB (Red/Black)



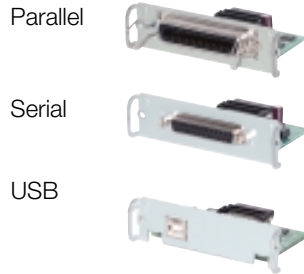
**Accessories**

**Wall mount kit**

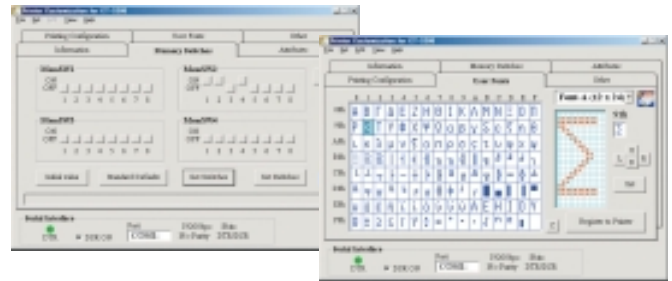
WALL-CT300



**Interface cards**



**Customization software for easy customization**



**Specifications**

Printing method	Serial dot impact (Logic-seeking control)
Printing direction	Bi-directional
Font	Font A: 7 × 9, 9 × 9 matrix
Number of columns	76.2mm paper : Font A-40/42 columns / Font B-33/35 columns 69.5mm paper : Font A-36/30 columns / Font B-38/31 columns (69.5mm paper width) 57.5mm paper : Font A-30/25 columns / Font B-31/26 columns (57.5mm paper width)
Printing speed	5.0 lines/sec at 76.2mm width+40 columns 5.4 lines/sec at 69.5mm width+36 columns 6.0 lines/sec at 57.5mm width+30 columns
Character size (W × H)	Font A: 1.25 × 3.12mm(7 × 9 dots), Font B: 1.57 × 3.12mm(9 × 9 dots)
Character set	Alphanumeric, International, Code page 437,850,860,863,865,852,866,857,858, WPC1252
Line spacing	4.23mm
Line feed speed	40 lines/sec
Paper feed method	Friction
Paper	76.2/69.5/57.5 ± 0.5mm × ø83mm Thickness:0.06-0.085mm(1 Ply) 1Ply/2Ply/3Ply copy paper 0.05 - 0.14mm(Copy paper cut) 0.05 - 0.20mm(Copy paper print)
Interface	Parallel(IEEE1284 compliant), or Serial(RS-232C), USB
Input buffer	4K/40 bytes
NV bit map data area	128K bytes
Drawer kick-out	2 drawers
Ink ribbon	Red/Black, Black, Purple, Cassette
Power supply	DC24V ± 7%
AC adapter	Input:AC 100-230V,1.3A Output:DC24V ± 5%
Weight	Approx.2.8kg(Standard type) 3.2kg(With auto cutter/winder type)
Dimensions (W × D × H)	156 × 247.7 × 174.4mm(Standard type/with auto cutter type) 156 × 277.7 × 197.8mm(Winder type)
Operating environment	0 - 50°C, 10 - 90% RH
Storage environment	-20 - 70°C, 5 - 90% RH
Reliability	Printer:MCBF 7.5 million lines Print Head:150 million characters Auto cutter:1,000,000 cuts
EMC and Safety standards	UL, C-UL, FCC classA, TUV-GS, CE marking